

Cobb GIS “Basic Data Set”: Free Download - Data Specifications

(December 2013)



The information contained in this document describes GIS data found in the free downloadable dataset available on the GIS section of the Cobb County Web site. All of the datasets maintained by Cobb County GIS conform to certain published standards and they are detailed under the Cobb County data definitions section of this document.

We provide these data in good faith and shall in no event be liable for any lost profits and special, indirect or consequential damages to any party, arising out of or in connection with the use or the inability to use the data hereon or the services provided.

There are 11 main files (ESRI Shape files) contained in the download. These files are defined and described more fully in the following sections. Each layer has a LYR file for your easy use with the symbol which is classified in ArcMap. Please note that you can also download a “finished” copy of the Future Land Use Map in PDF format from the GIS download section of the website.

Cobb Data Definitions

Data Projection:

Spatial_Reference_Information:

Horizontal_Coordinate_System_Definition:

Planar:

Grid_Coordinate_System:

Grid_Coordinate_System_Name: **State Plane Coordinate System 1983**

State_Plane_Coordinate_System:

SPCS_Zone_Identifier: 1002

Transverse_Mercator: Geodetic_Model: Horizontal_Datum_Name: **North American Datum of 1983**

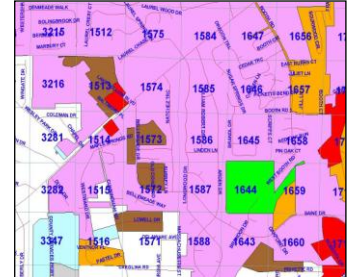
Ellipsoid_Name: Geodetic **Reference System 80** Metadata_Standard_Name: FGDC Content Standards for Digital Geospatial Metadata Metadata_Standard_Version: FGDC-STD-001-1998

The following shapefiles are included in the downloadable dataset and are summarized in individual tables on the following pages.

- Key attribute names are listed with their “common” names as a reference guide.
- A small “image or picture” of the data follows each table.
- The LYR (legend templates) files listed on the “Legends” field may be used as aid to viewing the data and making and printing your own map.

Cobb County Future Land Use

- Data Contact: Community Development, (770).528.2002 email: addressing@cobbcounty.org.
- Updated Annually for distribution
- For specific information about the Future Land Use Map (as it relates to the Map itself), please contact Phillip Westbrook at 770-528-2014 (Phillip.Westbrook@cobbcounty.org). If you have land planning questions you should contact the Planning Office at 770-528-2018.

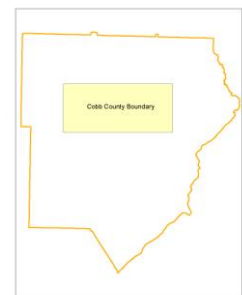


File name	Theme	Date of Update	Attribute names	Common Name	Available Legends
FLUM15.shp (Polygon)	Cobb Future Land use	Jan 2016	FLU_CODE1	First Level Code	FutureLandUse.lyr
			FLU_DESCR1	First Level Description	
			FLU_CODE2	Second Level Code	
			FLU_DESCR2	Second Level Description	
			FLU_ABBR2	Second Level Abbreviation	
			FLU_CODE3	Third Level Flum Code	
			FLU_DESCR3	Third Level Description	
			FLU_ABBR2	Third Level Abbreviation	
			TEXT_AMD	Amendment (Y/N)	
			AMEND_NUM	Amendment Number	
			AMEND_YEAR	Amendment Year	

Cobb County Boundary

Updated as needed.

Data Contact: Information Services at (770)-528-8700 or GIS_Support@cobbcounty.org

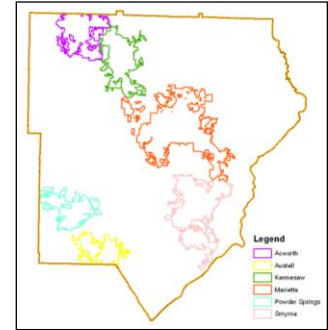


File name	Theme	Date of update	Attribute names	Common name	Legend/ArcGIS layer file
Cobbbnd.shp (Line)	Cobb County Boundary	2010	Length	Total Length of the boundary lines	cobbbnd.lyr

Cobb City Limits

Updated Quarterly for distribution

- Data Contact: Community Development, (770).528.2002 email: addressing@cobbcounty.org.

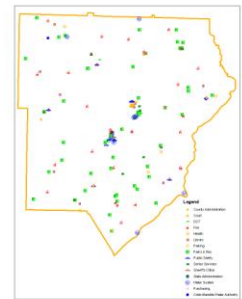


File Name	Theme	Date of Update	Attribute names	Common names	Legend/ArcGIS Layer File
Cities.shp (Polygon)	Cobb city limits	Jan 2016	NAME	City name	CityLimits.lyr

Cobb Facilities

Updated Quarterly for distribution

Data Contact: Information Services at (770)-528-8700 or GIS_Support@cobbcounty.org

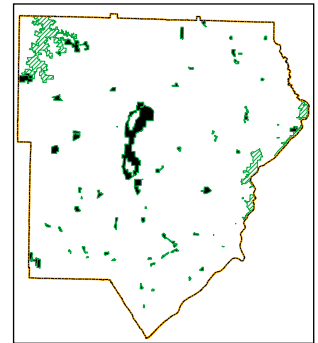


File Name	Theme	Date of Update	Attribute Names	Common Name	Legend/Layer file
Facilities.shp (Point)	Public facilities in Cobb County	Jan 2016	ADDRESS	Facility Address	Facilities.lyr
			TYPE	Type of facility	
			PHONE	Local phone	
			NAME	Facility name	
			URL	Facility Website Address	

Cobb Parks

Updated Quarterly for distribution

Data Contact: Information Services at (770)-528-8700 or
GIS_Support@cobbcounty.org

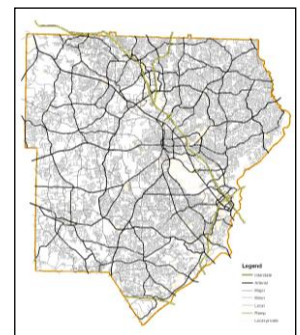


File Name	Theme	Date of Update	Attribute Names	Common Name	Legend/Layer file
Parks.shp (Polygon)	Location of public parks	Jan 2016	Total ACRES	Acreage of park	Parks.lyr
			NAME	Name of park	
			Park TYPE	Type of park / ownership	

Cobb Roads

Updated Quarterly for distribution

Data Contact: Cobb DOT, (770) 528-1600, email: cobbdot@cobbcounty.org

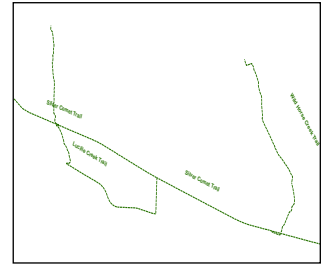


File Name	Theme	Date of Update	Attribute Names	Common Name	Legend/Layer file
CobbRoads.shp (line)	Road system (single line) for Cobb County	Jan 2016	PREFIXDIR	Prefix direction	CobbRoads.lyr
			SUFFIXDIR	Suffix direction	
			ST_NAME	Street/Road name	
			TYPE	Type of road/street	
			Functional	Functional class	

Trails

Updated Quarterly for distribution

Data Contact: Cobb DOT, (770) 528-1600, email: cobbdot@cobbcounty.org



File Name	Theme	Date of Update	Attribute Names	Common Name	Legend/Layer file
Trails.shp (point)	Existing Trails in Cobb County	Jan 2016	NAME	Trail Name	Trails.lyr
			STATUS	Trail Status	
			LENGTH	Trail Segment Length	

Cobb Subdivisions

Updated Annually for Distribution, based on state approved Tax Digest (mid-summer)

Data Contact: Tax Assessor Office (770)528-3100, email:

cobbtaxassessor@cobbcounty.org



File Name	Theme	Date of Update	Attribute Names	Common Name	Legend/Layer file
Subdivisions.shp (polygon)	Location of subdivisions in Cobb County	Jan 2016	NAME	Subdivision name	Subdivisions.lyr
			PHASE	Phase	

Cobb Land Lots

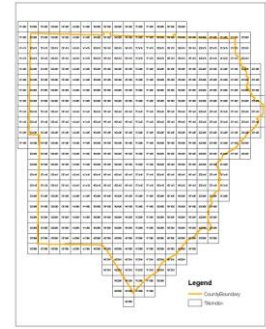
Data Contact: Tax Assessor Office (770)528-3100, email:

cobbtaxassessor@cobbcounty.org

File Name	Theme	Date of Update	Attribute Names	Common Name	Legend/Layer file
Landlots.shp (polygon)	Land lots in Cobb County	December 2011	SHAPE_Area	Area of land lot	Landlots.lyr
			SHAPE_Len	Perimeter distance	
			LAND_LOT	Land lot number	
			LAND_DIST	District number	
			CWTRNCH	Civil war trench	
			HIST_SITES	Historic site: yes or no	
			STQUAD	Quadrant designation	
			ACRES	Number of acres	
			HECTARES	Number of hectares	
			LABEL	District and Land lot number concatenated	

Cobb Tile Index

Data Contact: Information Services at (770)-528-8700 or
GIS_Support@cobbcounty.org

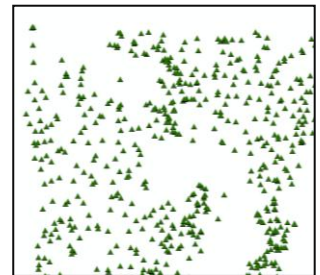


File Name	Theme	Date of Update	Attribute Names	Common Name	Legend/Layer file
Cobbindex.shp (Polygon)	Tile index grid layer Cobb County	2000	TILE_NUMBE	Tile number	CobblIndex.lyr

Traffic Counts (Active locations)

Updated Quarterly for distribution

Data Contact: Cobb DOT, (770) 528-1600, email: cobbdot@cobbcounty.org



File Name	Theme	Date of Update	Attribute Names	Common Name	Legend/Layer file
TrafficCounts.shp (Point)	Active Traffic County Locations	Jan 2016	DATE	DATE of last reading	
			LOCATIONDE	Location Description of reading equipment	
			ADT	Average Daily Traffic (ADT) which is a 24- hour count of vehicles for both directions of travel	
			ACTIVE	Status of location	